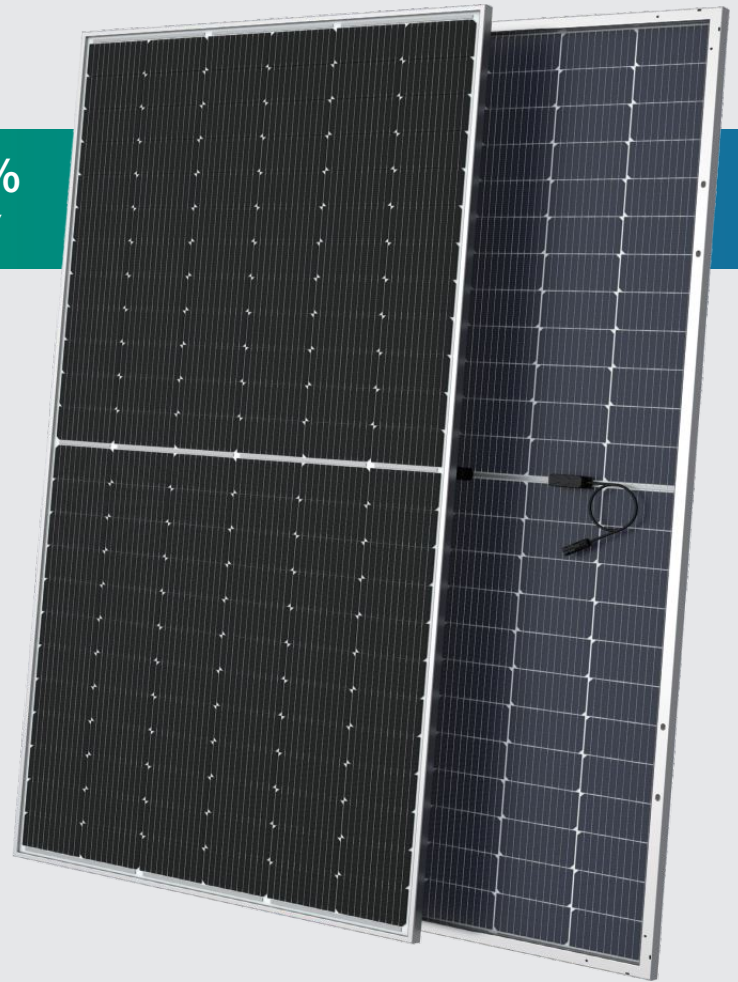


Mono-crystalline Bifacial Solar Module (72Cells)

CEC6-72MDHV

530~555W
POWER OUTPUT RANGE

20.5%~21.5%
MODULE EFFICIENCY



PRODUCT CHARACTERISTICS

- ◆ Light weight, easy to install, high cost performance, high efficiency, Low LCOE, double sided power generation
- ◆ Module certified to withstand extreme wind (2400 Pascal) and snow loads (5400 Pascal)
- ◆ Guaranteed output: 0~+5W
- ◆ Excellent performance in weak light condition, such as cloudy, morning and sunset
- ◆ Independently certified by international certification authorities, including IEC61215, IEC61730, CE

LINEAR WARRANTY AND CERTIFICATION

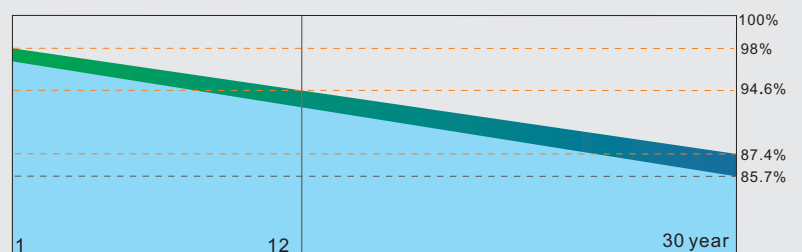


1st YEAR 1st year Power output not less than 99%

12 YEAR Warranty for product materials and processes within 12 years

12 YEAR Power output not less than 94.6% within 12 years

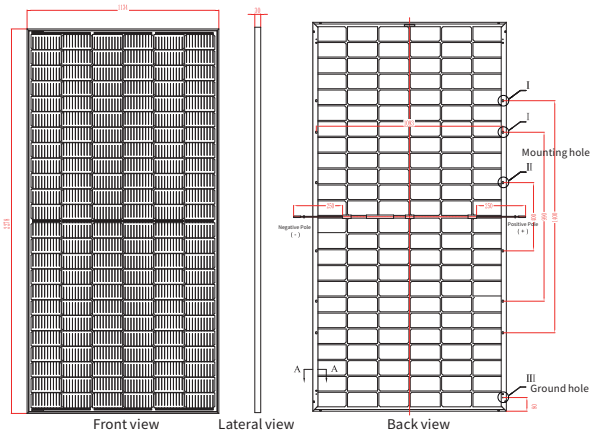
30 YEAR Power output not less than 87.4% within 25 years



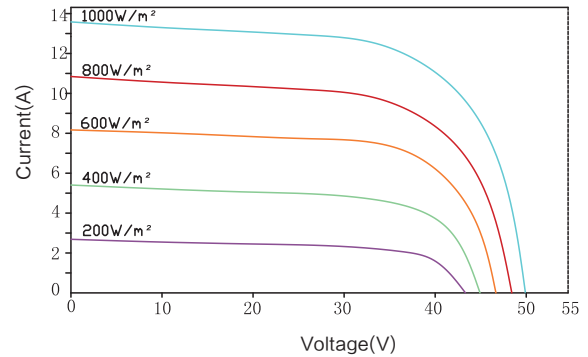
■ CECEP Solar linear power warranty
■ Normal module linear power warranty

QUALITY OF CENTRAL ENTERPRISE SERVICE GUARANTEE

Assembly Drawing



I-V Curve (540W)



Limit Parameters

| | |
|-----------------------------|----------------|
| Operating temperature | -40°C to +85°C |
| Maximum fuse current rating | 25A |

Physical Parameter

| | |
|--------------------|-------------------------------|
| Dimension | 2278*1134*30mm |
| Mounting hole size | 400*1093,990*1093,1400*1093mm |
| Cable Length | 250mm; Customizable |
| Weight | 32.6Kg |

Mechanical Characteristics

| | |
|--------------|--|
| Cell type | 182×91mm monocrystalline silicon solar cells, 144 cells (6×24) |
| Glass | 2.0 mm thick low-iron tempered glass with high light transmittance |
| Junction Box | IP Grade: IP68 |

Temperature Rating

| | |
|--|----------|
| Nominal Module Operating Temperature (NMOT) | 42°C±2°C |
| Maximum Power (Pmax) Temperature Coefficient (δ (%/°C)) | -0.34 |
| Open-circuit voltage (Voc) Temperature coefficient (β (%/°C)) | -0.26 |
| Short circuit current (Isc) Temperature coefficient (α (%/°C)) | 0.05 |

Mode of Packing

| | | |
|-----------------|-----------------------|------------------|
| 40'HQ Container | Pieces per pallet | 36 pcs/pallet |
| | pallets per container | 20 pallets/40'HQ |
| | Pieces per container | 720pcs/40'HQ |

Parameters of Module

| Electrical parameters (Standard test condition) | CEC6-72-530MDHV | CEC6-72-535MDHV | CEC6-72-540MDHV | CEC6-72-545MDHV | CEC6-72-550MDHV | CEC6-72-555MDHV |
|---|-----------------|-----------------|-----------------|-----------------|-----------------|-----------------|
| Maximum power-Pmax(Wp) | 530 | 535 | 540 | 545 | 550 | 555 |
| Maximum operating voltage-Vmp(V) | 41.77 | 42.01 | 42.23 | 42.45 | 42.67 | 42.90 |
| Maximum operating current-Imp(A) | 12.69 | 12.74 | 12.79 | 12.84 | 12.89 | 12.94 |
| Open-circuit voltage -Voc(V) | 49.65 | 49.78 | 49.91 | 50.01 | 50.14 | 50.26 |
| Short-circuit current-Isc(A) | 13.45 | 13.5 | 13.55 | 13.61 | 13.66 | 13.71 |
| Maximum system voltage-Vdc(V) | 1500 | 1500 | 1500 | 1500 | 1500 | 1500 |
| Module efficiency(%) | 20.5% | 20.7% | 20.9% | 21.1% | 21.3% | 21.5% |
| Power tolerance(W) | 0/+5W | 0/+5W | 0/+5W | 0/+5W | 0/+5W | 0/+5W |

Measured values under STC (temperature 25°C, air mass AM1.5, irradiance 1000W/m²)

Different back-side power gain (for example 535W)

| Power Gain | 5% | 10% | 15% | 20% | 25% |
|------------------------------|-------|-------|-------|-------|-------|
| Max Power(Wp) | 562 | 589 | 615 | 642 | 669 |
| Max-Power Voltage Vmp(V) | 42.01 | 42.01 | 42.01 | 42.01 | 42.01 |
| Max-Power Current Imp(A) | 13.38 | 14.01 | 14.65 | 15.29 | 15.93 |
| Open-Circuit Voltage Voc(V) | 49.78 | 49.78 | 49.78 | 49.78 | 49.78 |
| Short-Circuit Current Isc(A) | 14.18 | 14.85 | 15.53 | 16.20 | 16.88 |
| Module efficiency | 21.7% | 22.8% | 23.8% | 24.8% | 25.9% |



Make Power Generation More Green

No.9,Beishan Road,New District,Zhenjiang, Jiangsu,China 212132

Web: www.cecepsolar.com



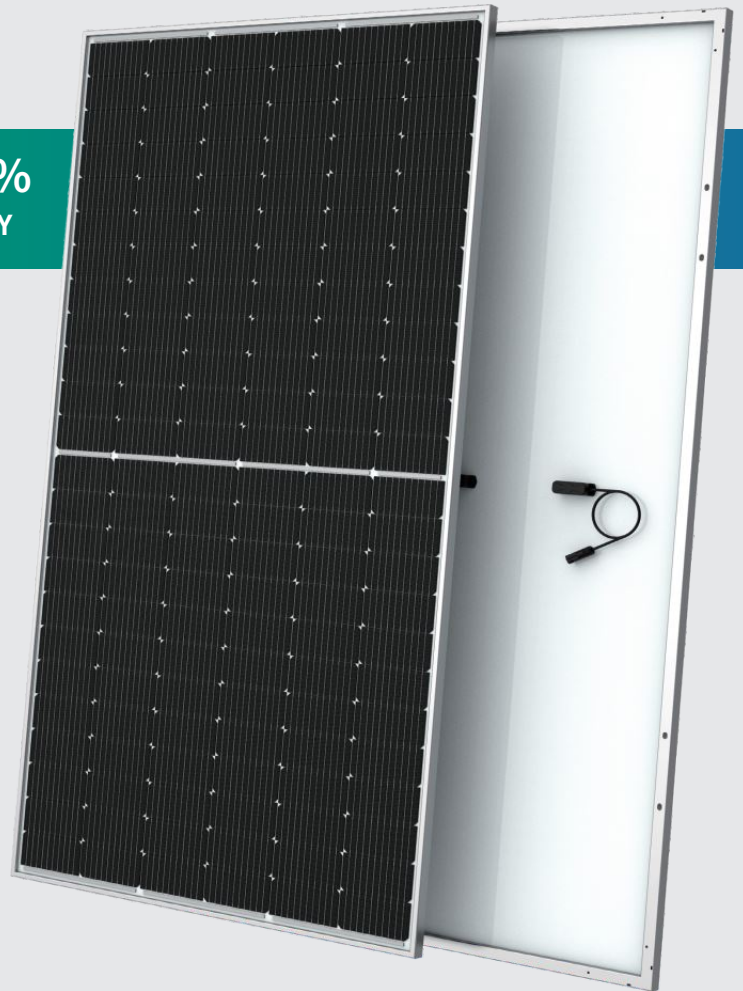
Mono-crystalline Solar Module (72Cells)

CEC6-72MH

530~555W **20.5%~21.5%**
POWER OUTPUT RANGE MODULE EFFICIENCY

PRODUCT CHARACTERISTICS

- ◆ Light weight, easy to install, high cost performance, high efficiency, Low LCOE, double sided power generation
- ◆ Module certified to withstand extreme wind (2400 Pascal) and snow loads (5400 Pascal)
- ◆ Guaranteed output: 0~+5W
- ◆ Excellent performance in weak light condition, such as cloudy, morning and sunset
- ◆ Independently certified by international certification authorities, including IEC61215, IEC61730, CE



LINEAR WARRANTY AND CERTIFICATION

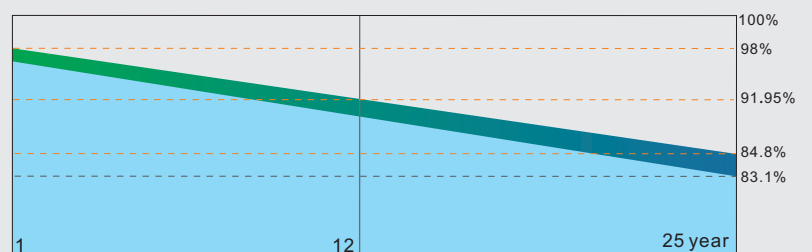


1st YEAR 1st year Power output not less than 98%

12 YEAR Warranty for product materials and processes within 12 years

12 YEAR Power output not less than 91.95% within 12 years

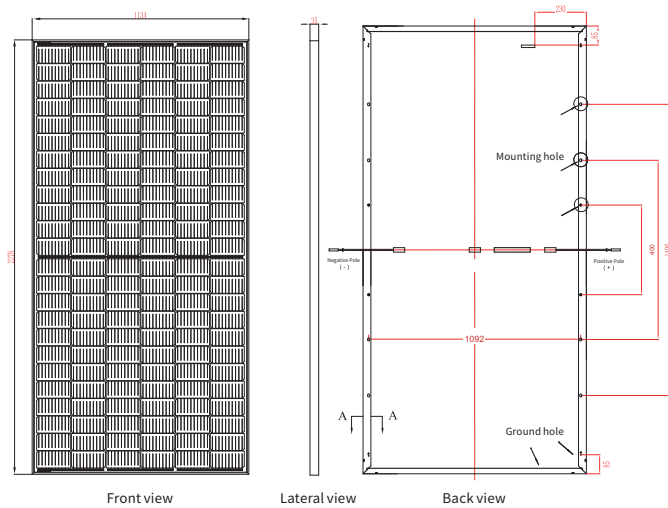
25 YEAR Power output not less than 84.8% within 25 years



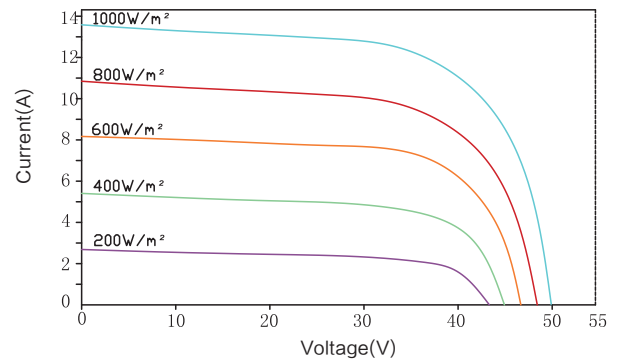
■ CECEP Solar linear power warranty
■ Normal module linear power warranty

QUALITY OF CENTRAL ENTERPRISE SERVICE GUARANTEE

Assembly Drawing



I-V Curve (540W)



Limit Parameters

| | |
|-----------------------------|----------------|
| Operating temperature | -40°C to +85°C |
| Maximum fuse current rating | 25A |

Physical Parameter

| | |
|--------------------|-------------------------------|
| Dimension | 2278*1134*35mm |
| Mounting hole size | 400*1092,990*1089,1400*1089mm |
| Cable Length | 250mm; Customizable |
| Weight | 28.3Kg |

Mechanical Characteristics

| | |
|--------------|--|
| Cell type | 182×91mm monocrystalline silicon solar cells, 144 cells (6×24) |
| Glass | 3.2 mm thick low-iron tempered glass with high light transmittance |
| Junction Box | IP Grade: IP68 |

Temperature Rating

| | |
|--|----------|
| Nominal Module Operating Temperature (NMOT) | 42°C±2°C |
| Maximum Power (Pmax) Temperature Coefficient (δ (%/°C)) | -0.30 |
| Open-circuit voltage (Voc) Temperature coefficient (β (%/°C)) | -0.26 |
| Short circuit current (Isc) Temperature coefficient (α (%/°C)) | 0.05 |

Mode of Packing

| | | |
|-----------------|-----------------------|------------------|
| 40'HQ Container | Pieces per pallet | 31 pcs/pallet |
| | pallets per container | 20 pallets/40'HQ |
| | Pieces per container | 620pcs/40'HQ |

Parameters of Module

| Electrical parameters (Standard test condition) | CEC-72-530MH CEC-72-530MHV | CEC-72-535MH CEC-72-535MHV | CEC-72-540MH CEC-72-540MHV | CEC6-72-545MH/ CEC6-72-545MHV | CEC-72-550MH CEC-72-550MHV | CEC-72-555MH CEC-72-555MHV |
|---|-------------------------------|-------------------------------|-------------------------------|----------------------------------|-------------------------------|-------------------------------|
| Maximum power-Pmax(Wp) | 530 | 535 | 540 | 545 | 550 | 555 |
| Maximum operating voltage-Vmp(V) | 41.67 | 41.97 | 42.13 | 42.42 | 42.71 | 42.99 |
| Maximum operating current-Imp(A) | 12.72 | 12.75 | 12.82 | 12.85 | 12.88 | 12.91 |
| Open-circuit voltage-Voc(V) | 49.64 | 49.77 | 49.91 | 50.02 | 50.14 | 50.26 |
| Short-circuit current-Isc(A) | 13.48 | 13.52 | 13.58 | 13.62 | 13.68 | 13.72 |
| Maximum system voltage-Vdc(V) | 1000/1500 | 1000/1500 | 1000/1500 | 1000/1500 | 1000/1500 | 1000/1500 |
| Module efficiency(%) | 20.5% | 20.7% | 20.9% | 21.1% | 21.3% | 21.5% |
| Power tolerance(W) | 0/+5W | 0/+5W | 0/+5W | 0/+5W | 0/+5W | 0/+5W |

Measured values under STC (temperature 25°C, air mass AM1.5, irradiance 1000W/m²)



Make Power Generation More Green

No.9,Beishan Road,New District,Zhenjiang, Jiangsu,China 212132

Web: www.cecepsolar.com

